

Truck-mounted concrete pump M 47-5

Great reach on 4 axles, minimal support width, and plenty of space for accessories

Putzmeister



Robust technology: pumps, hydraulic system and hopper

- Proven reliability – the S-transfer tube
- Free flow hydraulic system in a closed circuit (almost the only manufacturer)
- Fewer switchovers thanks to large cylinder volumes
- Extremely wear-resistant

- Very smooth running
- Low-maintenance modular pump unit
- High cylinder fill level
- Longer service life thanks to internally chromed delivery cylinders, as standard
- Low hopper fill level of approx. 130 cm (unsupported)
- Operator-friendly hopper
- Powerful pumps available for any application

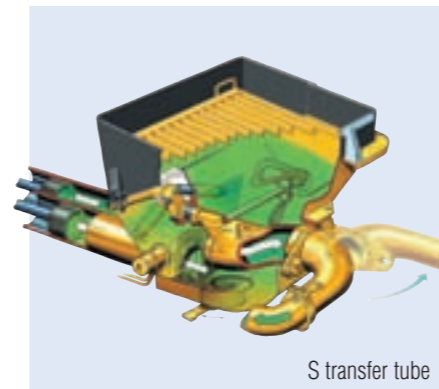
More reliability, greater efficiency, higher flexibility, lower costs

Supplied as standard:

- EPS (Ergonic® Pump System)
- EOC (Ergonic® Output Control)
- EGD Ergonic® Graphic Display
- EGD-RC (radio with display and enhanced setting options)
- Additional cable remote control for any application

Optional:

- EBC (Ergonic® Boom Control)
- EBC with Follow Me



Technical data pumps

M 47-5	BSF	Output* (m³/h)	Pressure* (bar)	Stroke (mm)	Cylinder ø (mm)	Strokes/min
	...14 H	140/88*	70/112*	2100	230	27/17*
	...16 H	160/108*	85/130*	2100	230	31/21*
	...16 H LS	160	85	2100	250	26

All data theoretical maximum values · Standard boom pipework: pressure up to max. 85 bar
* rod side/piston side · Max. delivery rates and max. delivery pressures cannot be operated at the same time.

The Putzmeister Group

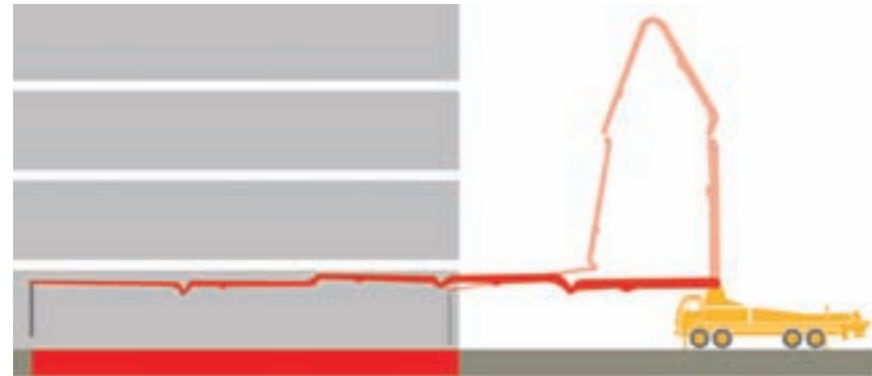
Concrete Technology PCT · Mortar Technology PMT
Pipe Technology PPT · Water Technology PWT
Industrial Technology PIT · Belt Technology PBT
Underground Technology PUC

Right to make technical amendments reserved
© by Putzmeister Concrete Pumps GmbH 2009
All rights reserved · Printed in Germany
Printed in Germany (20911Sc)

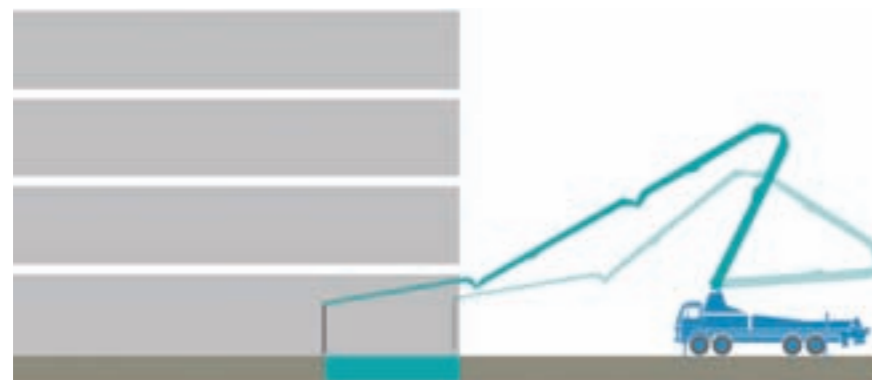
Putzmeister Concrete Pumps GmbH
Max-Eyth-Str. 10 · 72631 Aichtal / Germany
P.O.Box 2152 · 72629 Aichtal / Germany
Tel. +49 (7127) 599-0 · Fax +49 (7127) 599-520
E-Mail: pmw@pmw.de · www.putzmeister.com

Putzmeister

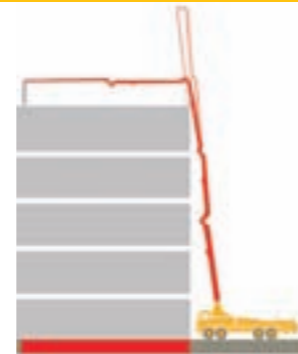
Maximum flexibility plus great reach and the most compact 4-axle substructure in its class



5-arm boom: When reaching into buildings, the hinge of the fifth boom is crucial to reaching fully into the building interior.



4-arm boom: Because of its lower flexibility, a 4-arm boom has difficulty in reaching into buildings or under similar circumstances, or loses net horizontal reach due to its considerable distance from the placement site.



5-arm boom: The additional hinge increases not only flexibility and deployment potential but also the net horizontal reach.

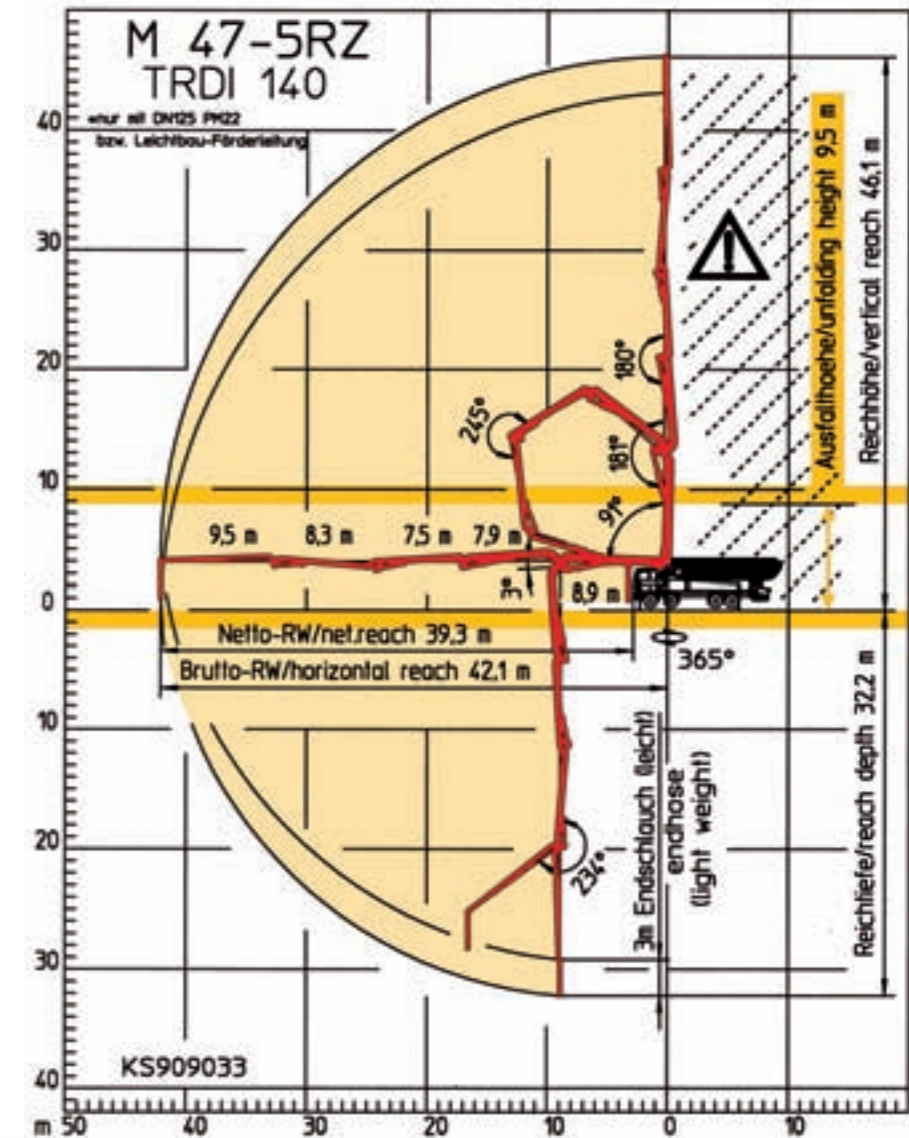
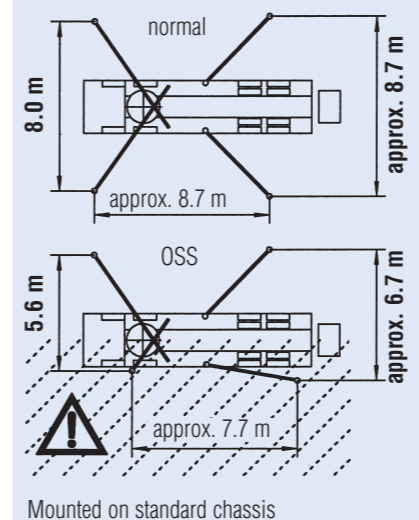


4-arm boom: With one hinge less, net horizontal reach is lost. When concreting onto the edge of a building, reverse boom movement may create a danger zone. If the machine is placed lengthwise to the building along a street, the street would have to be secured over a wider area.

Technical data

Boom M 47-5

Folding type	5-section roll-Z-fold (RZ)
Vertical reach	46.1 m
Horizontal reach	42.1 m gross
Reach depth	32.2 m
Unfolding height	9.5 m
Length endhose	3 m
Delivery line	DN 125, max. 85 bar
Slewing range	365°
Support width	front / rear
normal	8.0 m / approx. 8.7 m
OSS	5.6 m / approx. 6.7 m



The compact large boom: Minimum space requirement and maximum working area on any site

- Minimum support width when the OSS is used (assistance device for one-side support, option): 5.6 m at the front, 6.7 m at the rear. The traffic is hereby not hindered as greatly. This saves both time and costs when blocking off the road.
- Small support area, even when fully supported (8.0 m front, approx. 8.7 m rear)

- Thanks to the small set-up area the large net reach can be optimally utilised
- The 5-section boom has an impressive reach for the requirements in building constructions and civil engineering projects
- Concreting without dead areas directly from the cab
- The roll-and-fold Z boom system with 5 arms allows greater reach to floors of different heights
- Thanks to the roll Z-fold, the M 47-5 can be unfolded entirely over the set-up area – ideal for working in a tight space, for example between buildings

Practice-oriented equipment and accessories

- Standard pipelines without special pipe bends, DN 125 through to end hose
- Self-actuating catching of end hose when folding the booms
- Easily accessible, large storage areas
- Powerful flushing water pump with a delivery rate of 160 l/min and a pressure of 25 bar
- High-pressure water pump (100 bar) available as an option
- Lockable toolbox



Dimensions may vary depending on superstructure. Weight in total ≤ 36 t, height in total < 4000 mm, width in total < 2500 mm