

Robust technology: pumps, hydraulic system and hopper

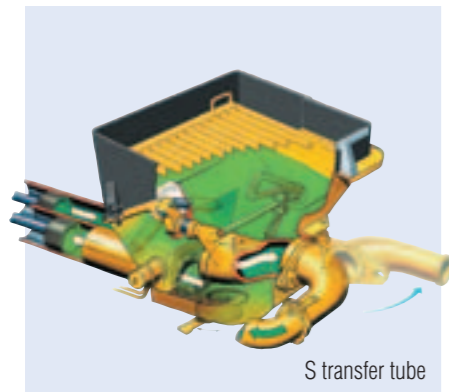
- Proven reliability – the S-transfer tube
- Free flow hydraulic system in a closed circuit (almost the only manufacturer)
- Fewer switchovers thanks to large cylinder volumes

- Extremely wear-resistant
- Very smooth running
- Low-maintenance modular pump unit
- High cylinder fill level
- Longer service life thanks to internally chromed delivery cylinders, as standard
- Low hopper fill level of approx. 130 cm (unsupported)
- Operator-friendly hopper
- Powerful pumps available for any application

More reliability, greater efficiency, higher flexibility, lower costs

- Supplied as standard:
- EPS (Ergonic® Pump System)
 - EOC (Ergonic® Output Control)
 - EGD (Ergonic® Graphic Display)
 - EGD-RC (radio with display and enhanced setting options)
 - Additional cable remote control

- Optional:
- EBC (Ergonic® Boom Control)



Technical data pump

M 49-5	BSF (m³/h)	Output* (bar)	Pressure* (mm)	Stroke (mm)	Cylinder ø	Strokes/min
...16 H	160/108*	85/130*	2100	230	31/21*	

All data theoretical maximum values · Standard boom pipework: pressure up to max. 85 bar
* rod side/piston side · Max. delivery rates and max. delivery pressures cannot be operated at the same time.



The Putzmeister Group
Concrete Technology PCT
Mortar Technology PMT
Industrial Technology PIT
Underground Technology PUC

Right to make technical amendments reserved
© by Putzmeister Concrete Pumps GmbH 2012
All rights reserved
Printed in Germany (11203Sc)

Putzmeister Concrete Pumps GmbH
Max-Eyth-Str. 10 · 72631 Aichtal/Germany
P.O.Box 21 52 · 72629 Aichtal/Germany
Tel. +49 (71 27) 599-0 · Fax +49 (71 27) 599-520
E-mail: pmw@pmw.de · www.putzmeister.com

Putzmeister

Truck-mounted concrete pump M 49-5

Almost 50 m reach on 4 axles,
small support width, and plenty of space for accessories

Putzmeister



Maximum flexibility and extended range with space saving support system



5-arm boom: When reaching into buildings, the hinge of the fifth boom is crucial to reaching fully into the building interior.



5-arm boom: The additional hinge increases not only flexibility and deployment potential but also the net horizontal reach.



4-arm boom: Because of its lower flexibility, a 4-arm boom has difficulty in reaching into buildings or under similar circumstances, or loses net horizontal reach due to its considerable distance from the placement site.



4-arm boom: With one hinge less, net horizontal reach is lost. When concreting onto the edge of a building, reverse boom movement may create a danger zone. If the machine is placed lengthwise to the building along a street, the street would have to be secured over a wider area.

The compact large boom: Minimum space requirement and maximum working area on any site

- Minimum support width when the OSS is used (assistance device for one-side support, option): 5.7 m at the front, approx. 7.5 m at the rear. The traffic is hereby not hindered as greatly. This saves both time and costs when blocking off the road.
- Small support area, even when fully supported (9.3 m front, approx. 10.5 m rear)

- Thanks to the small set-up area the large net reach can be optimally utilised
- The 5-section boom has an impressive reach for the requirements in building constructions and civil engineering projects
- Concreting without dead areas directly from the cab
- The roll-Z-fold boom with 5 arms allows greater reach to floors of different heights
- Thanks to the roll-Z-fold, the M 49-5 can be unfolded entirely over the set-up area – ideal for working in a tight space, for example between buildings

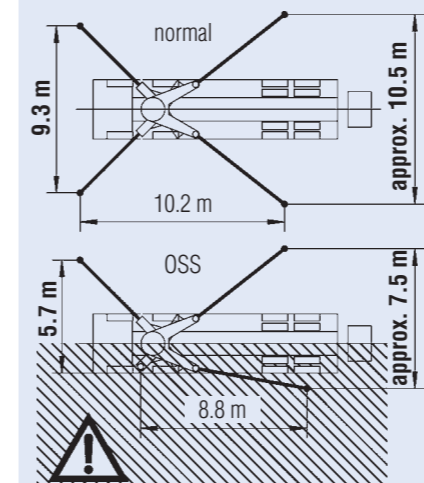
Practice-oriented equipment and accessories

- Standard pipelines without special pipe bends, DN 125 through to end hose
- Self-actuating catching of end hose when folding the booms
- Easily accessible, large storage areas
- Powerful flushing water pump with a delivery rate of 160 l/min and a pressure of 25 bar
- High-pressure water pump (100 bar) available as an option
- Lockable toolbox

Technical data

Boom M 49-5

Folding type	5-section roll-Z-fold (RZ)
Vertical reach	48.4 m
Horizontal reach	44.5 m gross
Reach depth	33.9 m
Unfolding height	10.0 m
Length endhose	3 m
Delivery line	DN 125, max. 85 bar
Slewing range	365°
Support width front / rear	normal 9.3 m / approx. 10.5 m
OSS	5.7 m / approx. 7.5 m



Country-specific approval requirements for 4 or 5 axles must be checked.

Dimensions may vary depending on superstructure, height in total ≤ 4000 mm, width in total ≤ 2500 mm. Weight depending on equipment and chassis, weight in total ≤ 40 t

