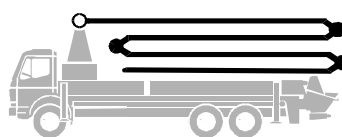


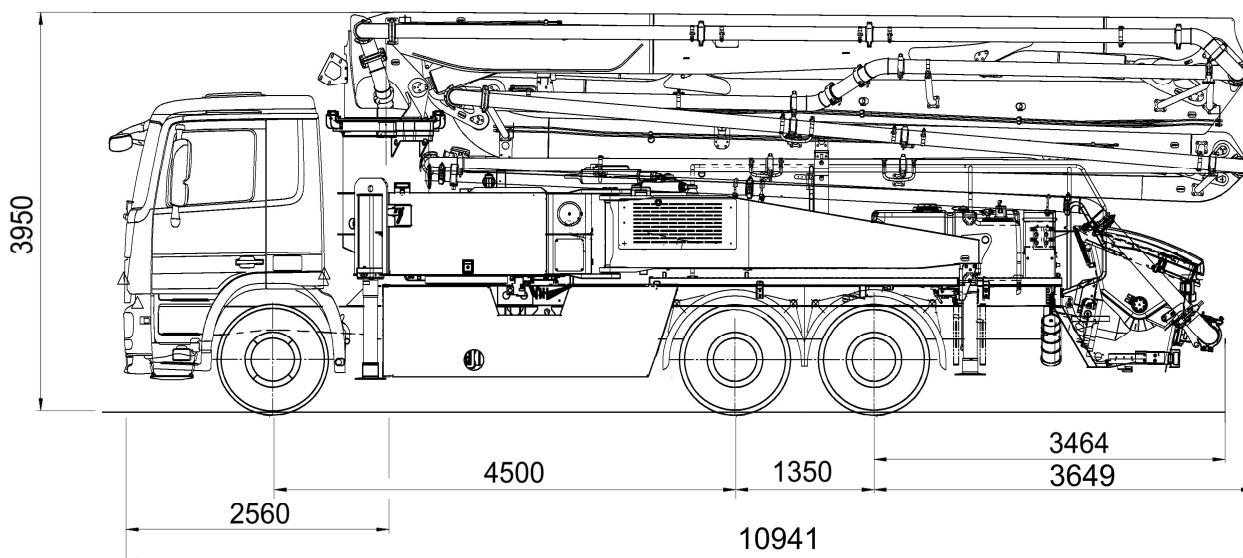
Truck-mounted concrete pump

BSF 36-4.16 H



.16 H LS

Output up to 160 m³/h
Delivery pressure up to 85 bar



Note: Standard version. Dimensions and weights depend on truck, pump model and equipment.
Dimensions in mm, MB-Actros 2632 Euro 5 as example

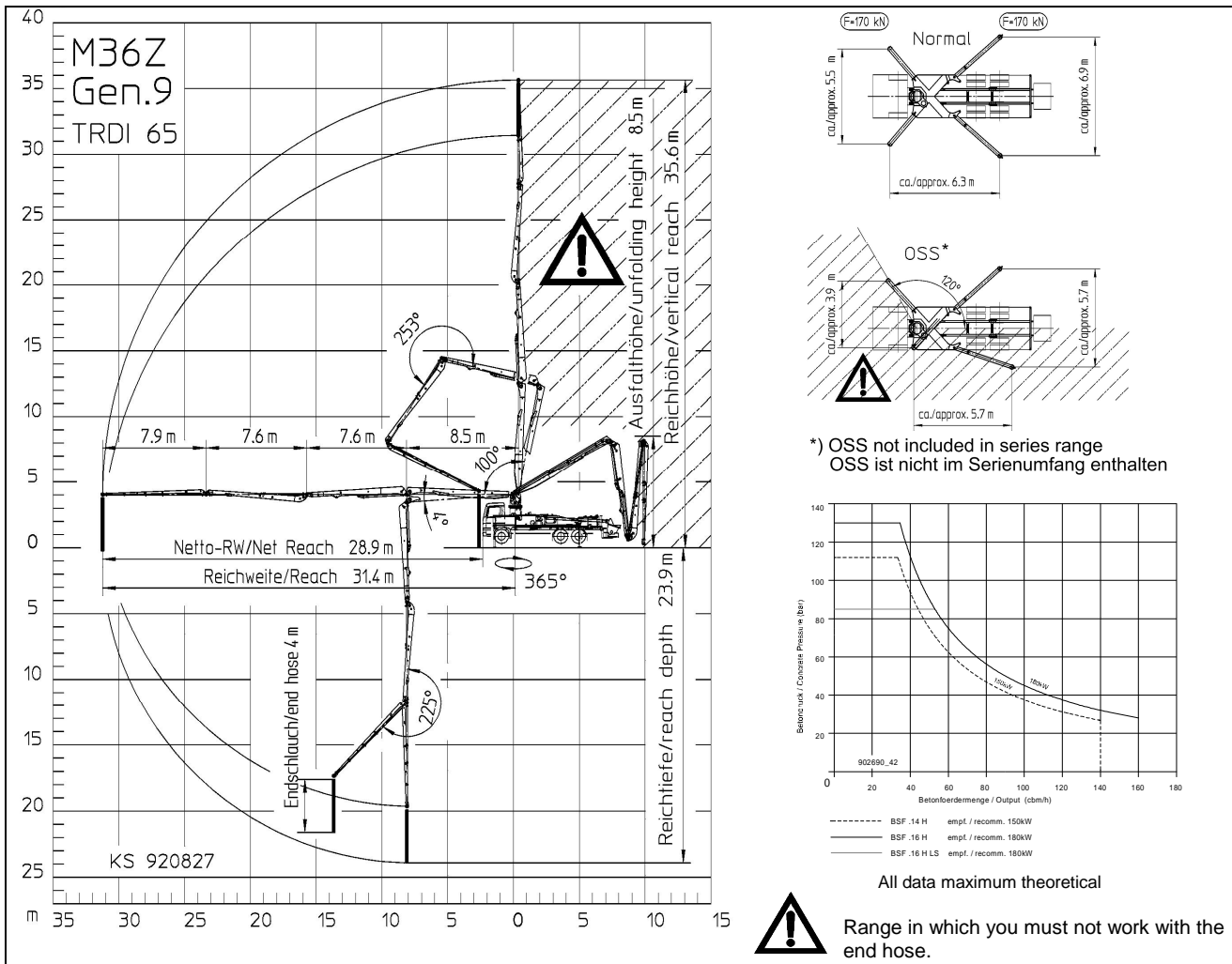
Technical Data

Boom M			
Sections			4
Reach height	m		35.6
Horizontal reach	gross	m	31.4
	net	m	28.9
Reach depth max.	m		23.9
Unfolding height	m		8.5
End hose length	m		4
Folding system			Z
Delivery line			DN 125

Pump			BSF .14 H	.16 H	.16H LS
Rod side	Output	m ³ /h	140	160	-
	Delivery pressure	bar	70	85	-
	Strokes	1/min.	27	31	-
Piston side	Output	m ³ /h	-	-	160
	Delivery pressure	bar	-	-	85
	Strokes	1/min.	-	-	26
	Delivery cylinder	∅ mm	230	230	250
Stroke	mm	2100	2100	2100	

*Delivery line boom max. 85 bar.
All data maximum theoretical.

Reach information diagram, Support, Performance diagram



Serial delivery scope

Agitator and water pump radio remote / on-site controlled

Agitator safety cutout (RSA) in RFID with self-start protection

Box for delivery slip

Box for sponge ball

C-Pipe connection for filling water tank

Cardan shaft maintenance free

Central lubrication hopper, electrically

Concrete hopper RS 909 with agitator

Connections for hydraulic emergency supply

Delivery cylinder chrome plated

Delivery line (1-layer) PM40, arm assembly

Delivery piston "compact" (16 H), „single“ (16 H LS)

Diagnose interface

End hose 4,0 m DN 125

Ergonic Graphic Display (EGD) with machine-failure- management

Ergonic Pump System (EPS) incl. Ergonic Output Control (EOC)

Flushing water pump 160 l/min 25 bar

Guardrail right side / grab left side

Hinged elbow with cleaning port

Horn via mushroom button at hopper

Hydraulic spare hose in hose-package

Operating manual certified (1xPaper, 1xCD-Rom), sparep.list.

Platform non-skid

pump on/off dependent on speed

Radio remote control proportional with display

Rear steps, 1st step foldable

Remote control with 40m cable, without display

Rubber collar at hopper

Spectacle wear plate DURO 22

Splash guard fixed

Spray hose 10 m incl. bracket

Storage box, plastic, black

S-transfer tube switchover normal/fast

Support plates at slewing legs in holder

Tool set incl. standard equipment

Towing eye

Wateroutlet for small amounts at hopper (1/2")

Watertank 800 l

Working light for lightening of hopper

See quotation for exact serial delivery scope.

Comprehensive range of options available on request.